

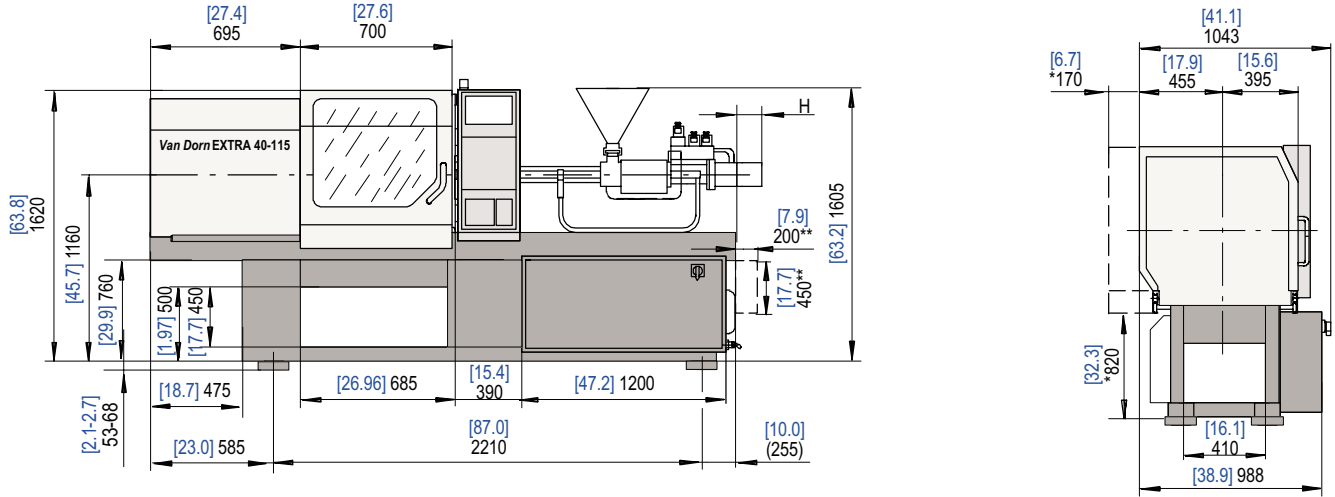
# Technical Data Van Dorn EXTRA 40

Van Dorn Demag		Van Dorn EXTRA 40					
Model description		Van Dorn EXTRA 40-80			Van Dorn EXTRA 40-115		
International size description		350-80			350-115		
<b>Clamping unit</b>		<b>40</b>					
Clamping force	[US Tons] [kN]	[39.3] 350					
Locking force	[USTons] [kN]	[39.3] 350					
Max.mold opening stroke	[in] [mm]	[13.8] 350					
Min.mold height	[in] [mm]	[7.1/5.1/4.1] 180/130/105 <sup>1)</sup>					
Max.mold height	[in] [mm]	-					
Max. daylight	[in] [mm]	[20.9] 530					
Mold platen (h x v)	[in] [mm]	[15.4x15.4] 390 x 390					
Distance between tie bars (h x v)	[in] [mm]	[11.0x11.0] 280 x 280					
Ejection stroke	[in] [mm]	[3.9] 100					
Ejection force	[US Tons] [kN]	[2.9] 26					
Retraction force	[US Tons] [kN]	[0.70] 6.2					
<b>Injection unit</b>		<b>80</b>			<b>115</b>		
Screw diameter	[in] [mm]	[.71] 18	[.87] 22	[.98] 25	[.87] 22	[.98] 25	[1.2] 30
L/D ratio		24/4	20	17/4	22/7	20	16/7
Injection pressure (up to752°F)	[psi] [bar]	[188.7] 2738	[126.3] 1833	[97.9] 1420	[168.2] 2441	[130.3] 1890	[90.5] 1313
Cylinder head volume	[in <sup>3</sup> ] [cm <sup>3</sup> ]	[1.7] 28	[2.6] 42	[3.3] 54	[2.9] 48	[3.7] 61	[5.4] 88
Max. shot weight (PS, PE*)	[oz] [g]	[0.88] 25	[1.3] 38	[1.7] 49	[1.52] 43	[1.9] 55	[2.8] 80
<b>Rate of injection</b>							
> without accumulator	[in <sup>3</sup> ] [cm <sup>3</sup> /s]	[4.0] 65	[6.1] 100	[7.9] 130	[3.7] 60	[4.9] 80	[6.7] 110
> with accumulator	[in <sup>3</sup> ] [cm <sup>3</sup> /s]	-	-	-	-	-	-
<b>Plasticizing rate (PS)</b>							
> motor 1 (1740 psi)	[oz/s] [g/s]	[0.18] 5.2	[3.0] 8.4	[0.46] 13.1	[0.23] 6.8	[0.37] 10.5	[6.1] 17.3
> motor 2 (1740 psi)	[oz/s] [g/s]	[0.14] 4.1	[0.24] 6.7	[0.37] 10.5	[0.19] 5.4	[0.30] 8.4	[0.49] 13.8
Max. screw stroke	[in] [mm]	[4.3] 110	[4.3] 110	[4.3] 110	[4.9] 125	[4.9] 125	[4.9] 125
Max. distance of nozzle retraction	[in] [mm]		[7.9] 200			[7.9] 200	
Max. nozzle dipping depth (SVO)	[in] [mm]		[1.2] 30			[1.2] 30	
Nozzle sealing force	[US Tons] [kN]		[6.7] 60			[6.7] 60	
Number of heating zones		4	4	4	4	4	4
Hopper capacity	[gal] [L]		[4.0] 15			[4.0] 15	
<b>General data</b>		<b>40-80</b>			<b>40-115</b>		
Oil tank capacity	[gal] [L]	[31.7] 120			[31.7] 120		
<b>Installed electrical rating</b>							
> pump unit	[hp] [kW]	[10] 7.5			[10] 7.5		
> heating capacity of screw cylinder	[kw]	4.5	4.5	4.5	6.3	6.3	6.3
> total	[kw]	12.0	12.0	12.0	13.8	13.8	13.8
Dry cycles (EUROMAP 6)	[s-in] [s-mm]	2.40-196			2.40-196		
Net weight (without oil)	[lb] [kg]	[3444.4] 1550			[3555.6] 1600		
Machine dimensions (l x w x h)	[in] [m]	[120.1/41.7/65.0] 3.05x1.06x1.65			[120.1/41.7/65.1] 3.05x1.06x1.65		
Screw motor overhang (H) <sup>2)</sup>	[in] [mm]	[0/0] 0/0	[0/0] 0/0	[0/0] 0/0	[0/0] 0/0	[0/0] 0/0	[0/0] 0/0

We reserve the right to make changes as a result of further technical advantages.  
Plasticizing rate depends on processing conditions and material employed.

- 1) max. opening stroke is constant for all mold heights  
2) carriage forward/carriage back

Machine dimensions Van Dorn EXTRA 40



\* enlarged safety guard, applicable with sprue picker  
 \*\* Dimensions for hot runner control

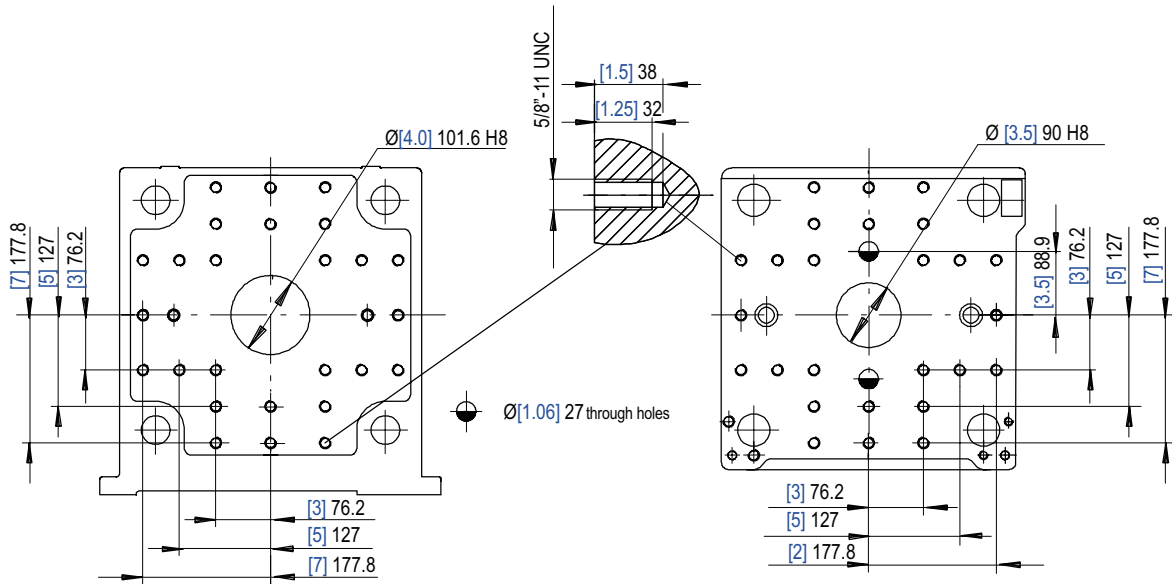
Platen dimensions Van Dorn EXTRA 20

Fixed platen

Moving platen

A - A

B - B



Hole pattern according SPI  
 k = minimum permissible mold-Ø 6.3"/160 mm  
 Max. permissible mold weight 500 lbs/230 kg  
 max. 350 lbs./150 kg of it on the moving platen support bearings  
 Centring diameter 2 x 110 H8

**Demag**Plastics Group  
**VAN DORN**

Van Dorn Demag Corporation  
 11792 Alameda Drive  
 Strongsville, Ohio 44149 USA  
 tel: 440/876.8960  
 fax: 440/876.4383  
 web: www.vandorndemag.com

6/03/1500  
 03.13.02.1