

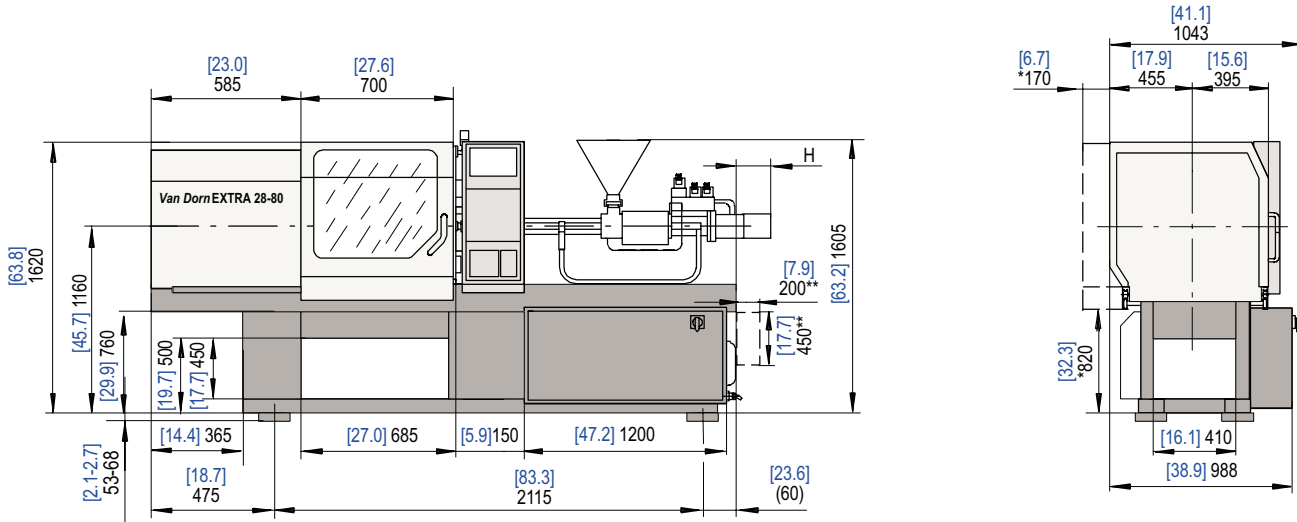
Technical Data Van Dorn EXTRA 28

Van Dorn Demag		Van Dorn EXTRA 28			
Model description		Van Dorn EXTRA 28-80			
International size description		250-80			
Clamping unit		28			
Clamping force	[US Tons] [kN]	[28.1] 250			
Locking force	[USTons] [kN]	[28.1] 250			
Max. mold opening stroke	[in] [mm]	[12.4] 315			
Min. mold height	[in] [mm]	[6.3/4.3] 160/110 ¹⁾			
Max. mold height	[in] [mm]	-			
Max. daylight	[in] [mm]	[18.7] 475			
Mold platen (h x v)	[in] [mm]	[15.4x15.4] 390 x 390			
Distance between tie bars (h x v)	[in] [mm]	[11.0x11.0] 280 x 280			
Ejection stroke	[in] [mm]	[3.9] 100			
Ejection force	[US Tons] [kN]	[3.3] 26			
Retraction force	[US Tons] [kN]	[0.70] 6.2			
Injection unit		80			
Screw diameter	[in] [mm]	[0.71] 18	[0.87] 22	[1.0] 25	
L/D ratio		24/4	20	17/4	
Injection pressure (up to 752°F)	[psi] [bar]	[188.7] 2738	[126.3] 1833	[97.8] 1420	
Cylinder head volume	[in ³] [cm ³]	[1.7] 28	[2.6] 42	[3.3] 54	
Max. shot weight (PS, PE*)	[oz] [g]	[0.88] 25	[1.3] 38	[1.7] 49	
Rate of injection					
> without accumulator	[in ³] [cm ³ /s]	[2.3] 37	[3.4] 55	[4.3] 71	
> with accumulator	[in ³] [cm ³ /s]	-	-	-	
Plasticizing rate (PS)					
> motor 1 (1740 psi)	[oz/s] [g/s]	[0.12] 3.5	[0.20] 5.8	[0.32] 9.0	
> motor 2 (1740 psi)	[oz/s] [g/s]	[0.10] 2.8	[0.17] 4.7	[0.25] 7.2	
Max. screw stroke	[in] [mm]	[4.3] 110	[4.3] 110	[4.3] 110	
Max. distance of nozzle retraction	[in] [mm]		[7.9] 200		
Max. nozzle dipping depth (SVO)	[in] [mm]		[1.2] 30		
Nozzle sealing force	[US Tons] [kN]		[6.7] 60		
Number of heating zones		4	4	4	
Hopper capacity	[gal] [L]		[4.0] 15		
General data		28-80			
Oil tank capacity	[gal] [L]	[31.7] 120			
Installed electrical rating					
> pump unit	[hp] [kW]		[7.3] 5.5		
> heating capacity of screw cylinder	[kw]	4.5	4.5	4.5	
> total	[kw]	10	10	10	
Dry cycles (EUROMAP 6)	[s-in] [s-mm]	[2.31-7.72] 2.31-196			
Net weight (without oil)	[lb] [kg]	[3444.4] 1550			
Machine dimensions (l x w x h)	[in] [m]	[104.3/40.9/65.0] 2.65x1.04x1.65			
Screw motor overhang (H) ²⁾	[in] [mm]	[0/7.7] 0/196	[0/7.7] 0/196	[0/7.7] 0/196	

We reserve the right to make changes as a result of further technical advantages. Plasticizing rate depends on processing conditions and material employed.

- 1) max. opening stroke is constant for all mold heights
- 2) carriage forward/carriage back

Machine dimensions Van Dorn EXTRA 28



* enlarged safety guard, applicable with sprue picker
 ** Dimensions for hot runner control

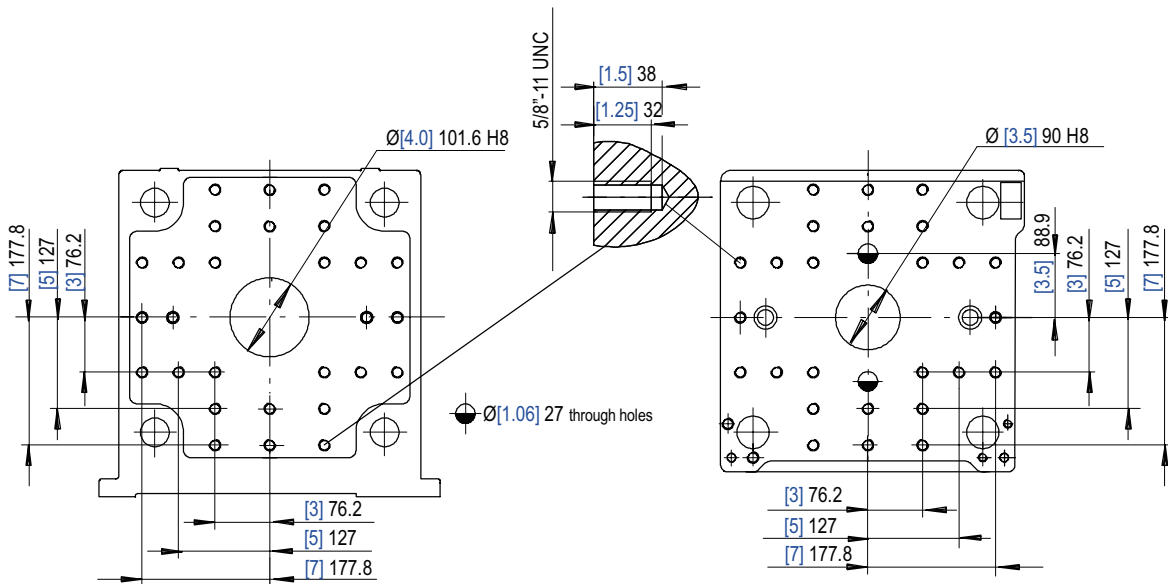
Platen dimensions Van Dorn EXTRA 28

Fixed platen

Moving platen

A - A

B - B



Hole pattern according SPI
 k = minimum permissible mold- \varnothing 6.3"/160 mm
 Max. permissible mold weight 500 lbs./230 kg
 max. 330 lbs./150 kg of it on the moving platen support bearings
 Centring diameter 2 x 110 H8

DemagPlastics Group
VAN DORN

Van Dorn Demag Corporation
 11792 Alameda Drive
 Strongsville, Ohio 44149 USA
 tel: 440/876.8960
 fax: 440/876.4383
 web: www.vandorndemag.com

6/03/1500
 03.13.01.1