

# IntElect Model 90

Demag Plastics Group		IntElect Model 90		
Model Description		100	150	310
International Size Description				

Clamp Unit				
Clamp Force	U.S. tons kN	90	800	
Clamp Stroke - Max.	in. mm	13.4	340	
Open Daylight - Max.	in. mm	29.5	750	
Mold Thickness - Min.	in. mm	5.9	150	
Mold Thickness - Max.	in. mm	16.1	410	
Distance Between Tie Bars				
Horizontal	in. mm	14.5	370	
Vertical	in. mm	14.5	370	
Platen Size				
Horizontal (Standard)	in. mm	23.6	600	
Vertical	in. mm	23.6	600	
Tie Bar Diameter	in. mm	2.36	60	
Ejector Data				
Ejector Stroke	in. mm	3.5	90	
Ejector Force	U.S. tons kN	2.8	25	

Injection Unit		100			150			310		
	Measure	A	B	C	A	B	C	A	B	C
Injection Capacity (GPPS)	oz.	1.2	1.6	2.3	1.6	2.3	3.1	3.6	4.9	6.4
	g	35	45	66	45	66	89	101	138	181
Injection Capacity	cu. in.	2.4	3.1	4.5	3.1	4.5	6.2	7.0	9.5	12.4
	ccm	39	51	74	51	74	101	114	155	203
Recovery Rate (GPPS)	oz./sec.	0.24	0.36	0.63	0.36	0.63	0.92	0.6	0.9	1.3
	g/sec	6.7	10.1	17.8	10.1	17.8	26.1	17.8	26.1	37.2
Injection Pressure	psi	37,400	29,100	20,200	40,600	29,300	21,500	36,300	31,200	23,900
	bar	2,580	2,005	1,390	2,800	2,020	1,485	2,500	2,150	1,640
Injection Rate	cu. in./sec.	3.4	4.5	6.4	4.5	6.4	8.8	6.4	8.8	11.5
	ccm/sec	56	73	105	73	105	144	105	144	189
Injection Stroke	in.	4.1	4.1	4.1	4.1	4.1	4.1	6.4	6.4	6.4
	mm	105	105	105	105	105	105	162	162	162
Screw Diameter	in.	0.87	0.98	1.18	0.98	1.18	1.38	1.18	1.38	1.57
	mm	22	25	30	25	30	35	30	35	40
Screw L/D Ratio		20/1	20/1	20/1	20/1	20/1	20/1	20/1	20/1	20/1
Maximum Screw Speed	rpm	500	500	500	500	500	500	500	500	500
Back Pressure Adjust	psi	50-300	50-300	50-300	50-300	50-300	50-300	50-300	50-300	50-300
	bar	3.5-20.7	3.5-20.7	3.5-20.7	3.5-20.7	3.5-20.7	3.5-20.7	3.5-20.7	3.5-20.7	3.5-20.7
Barrel Heating Capacity	kW	5.1	5.7	8.3	5.7	8.3	9.4	7.8	9.4	11.1

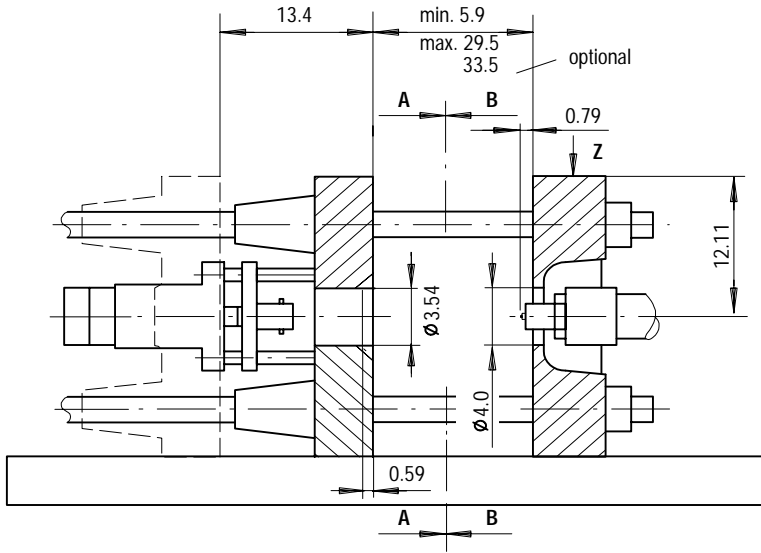
General Machine Specifications		100		150		310	
	Measure						
Length	ft. m	15.3	4.25	15.3	4.25	15.3	4.25
Width	ft. m	4.4	1.3	4.4	1.3	4.4	1.3
Height	ft. m	6.3	1.9	6.3	1.9	6.3	1.9
Machine Weight (approx.)	lb. kg	9,900	4,500	9,900	4,500	9,900	4,500

Performance specifications are based on theoretical data and mold, material and conditions. Since continuous improvement is Demag Plastics Group's policy, we reserve the right to change specifications, designs and performance data without prior notice or obligation.

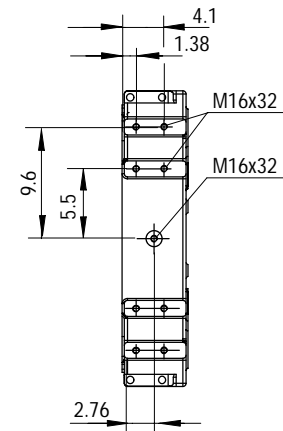
The specifications listed are standard. However, Demag Plastics Group will provide engineered options and solutions to meet virtually any performance requirements.

# IntElect Model 90

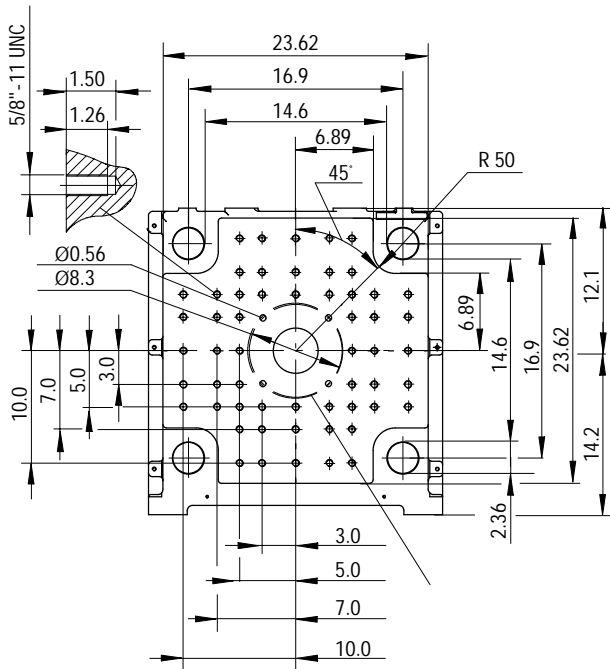
**CLAMP ASSEMBLY**



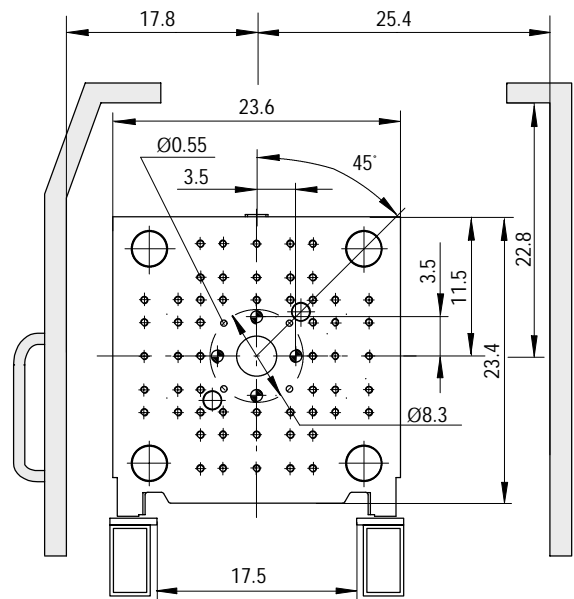
**ROBOT MOUNTING PATTERN**



**STATIONARY PLATEN**



**MOVABLE PLATEN**



Min. mold – 8.46" x 8.46" (215 mm x 215 mm)  
 Max. mold weight – 1,555 lbs. (700 kg)  
 Max. mold weight on movable platen – 1,000 lbs. (450 kg)

☉ Bore  $\phi 1.06"$  (27 mm) through holes

- 1) Bore  $\phi 0.55"$  (14 mm) through holes and  $\phi 0.79"$  (20 mm) from opposite side