

VANDORN™

IntElect
MODEL 50

Injection Unit

| International Size | | 100 | | | | 170 | | | 270 | | |
|--|-------------------------|-----------------|-----------------|-----------------|-----------------|-----------------|-----------------|-----------------|-----------------|-----------------|-----------------|
| | Measure | A+ | A | B | C | A | B | C | A | B | C |
| Injection Capacity (GPPS) | oz. g | 1.06 30.0 | 1.58 45.0 | 2.04 58.0 | 2.94 83.0 | 2.45 69.0 | 3.53 100.0 | 4.80 136.0 | 4.11 117.0 | 5.60 159.0 | 7.31 207.0 |
| Injection Capacity | cu. in. ccm | 1.90 32.0 | 2.90 48.0 | 3.70 61.0 | 5.40 88.0 | 4.50 74.0 | 6.50 106.0 | 8.80 144.0 | 7.50 124.0 | 10.3 168.0 | 13.4 220.0 |
| Recovery Rate (GPPS) | oz./sec. g/sec | 0.41 11.7 | 0.51 14.4 | 0.59 16.8 | 0.77 21.7 | 0.59 16.8 | 0.77 21.7 | 0.99 28.1 | 0.77 21.7 | 0.99 28.1 | 1.31 37.0 |
| Injection Pressure | psi bar | 36,000 2,482 | 29,959 2,066 | 23,200 1,600 | 16,111 1,111 | 33,408 2,303 | 23,200 1,600 | 17,045 1,175 | 31,578 2,177 | 23,200 1,600 | 17,763 1,225 |
| Injection Rate (@ 10,000psi) (@ 700 bar) | cu. in./sec. ccm/sec | 2.60 42.0 | 3.90 63.0 | 5.00 82.0 | 7.20 118.0 | 5.00 82.0 | 7.20 118.0 | 9.80 161.0 | 7.20 118.0 | 9.80 161.0 | 12.8 210.0 |
| Injection Stroke | in. mm | 4.90 125.0 | 4.90 125.0 | 4.90 125.0 | 4.90 125.0 | 5.90 150.0 | 5.90 150.0 | 5.90 150.0 | 6.90 175.0 | 6.90 175.0 | 6.90 175.0 |
| Screw Diameter | in. mm | 0.71 18.0 | 0.87 22.0 | 0.98 25.0 | 1.18 30.0 | 0.98 25.0 | 1.18 30.0 | 1.38 35.0 | 1.18 30.0 | 1.38 35.0 | 1.57 40.0 |
| Screw L/D Ratio | | 20/1 | 20/1 | 20/1 | 20/1 | 20/1 | 20/1 | 20/1 | 20/1 | 20/1 | 20/1 |
| Maximum Screw Speed | rpm rpm | 450.0 450.0 | 450.0 450.0 | 450.0 450.0 | 450.0 450.0 | 450.0 450.0 | 450.0 450.0 | 450.0 450.0 | 450.0 450.0 | 450.0 450.0 | 450.0 450.0 |
| Back Pressure Adjust | psi bar | 50-300 5-21 | 50-300 5-21 | 50-300 5-21 | 50-300 5-21 | 50-300 5-21 | 50-300 5-21 | 50-300 5-21 | 50-300 5-21 | 50-300 5-21 | 50-300 5-21 |
| Barrel Heating Capacity | kW kW | * * | * * | * * | * * | 7.8 7.8 | 7.8 7.8 | 7.8 7.8 | 11.58 11.58 | 11.58 11.58 | 11.58 11.58 |

*Consult your sales representative

General Machine Specifications

| | Measure | 100 | 170 | 270 |
|---------------------------|-----------|----------------|----------------|----------------|
| Machine Dimensions | | | | |
| Length | ft. m | 12.9 3.90 | 12.9 3.90 | 12.9 3.90 |
| Width | ft. m | 3.80 1.16 | 3.80 1.16 | 3.80 1.16 |
| Height | ft. m | 6.30 1.90 | 6.30 1.90 | 6.30 1.90 |
| Machine Weight (approx.) | lb. kg | 9,000 4,050 | 9,000 4,050 | 9,000 4,050 |

Clamp Unit

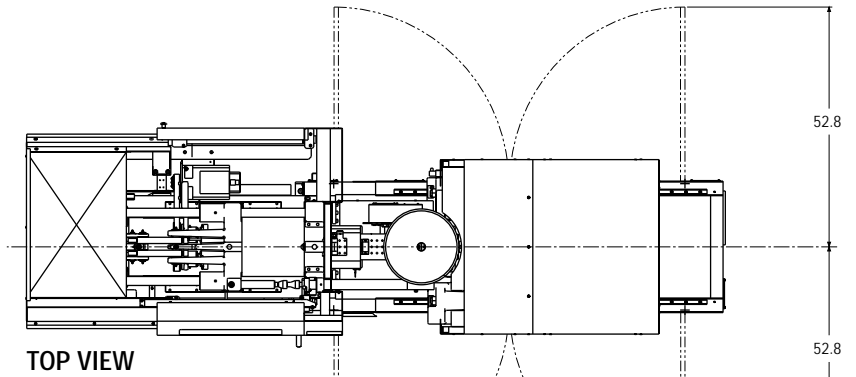
| | | |
|----------------------------------|-----------------|---------------|
| Clamp Force | U.S. tons kN | 50.0 445.0 |
| Clamp Stroke-Max. | in. mm | 9.84 250.0 |
| Open Daylight-Max. | in. mm | 23.6 600.0 |
| Mold Thickness-Min. | in. mm | 5.91 150.0 |
| Distance Between Tie Bars | | |
| Horizontal | in. mm | 13.0 330.0 |
| Vertical | in. mm | 13.0 330.0 |
| Platen Size | | |
| Horizontal (Standard) | in. mm | 19.4 493.0 |
| Vertical | in. mm | 19.7 500.0 |
| Tie Bar Diameter | in. mm | 1.97 50.0 |
| Ejector Data | | |
| Ejector Stroke | in. mm | 3.00 76.0 |
| Ejector Force | U.S. tons kN | 2.2 19.5 |

Performance specifications are based on theoretical data and mold, material and conditions. Since continuous improvement is Van Dorn Demag's policy, we reserve the right to change specifications, designs and performance data without prior notice or obligation.

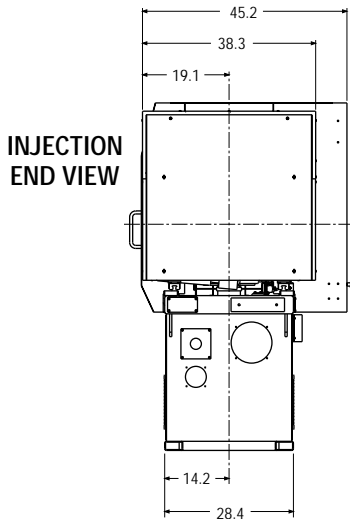
The specifications listed are standard. However, Van Dorn Demag will provide engineered options and solutions to meet virtually any performance requirements.

VANDORN™

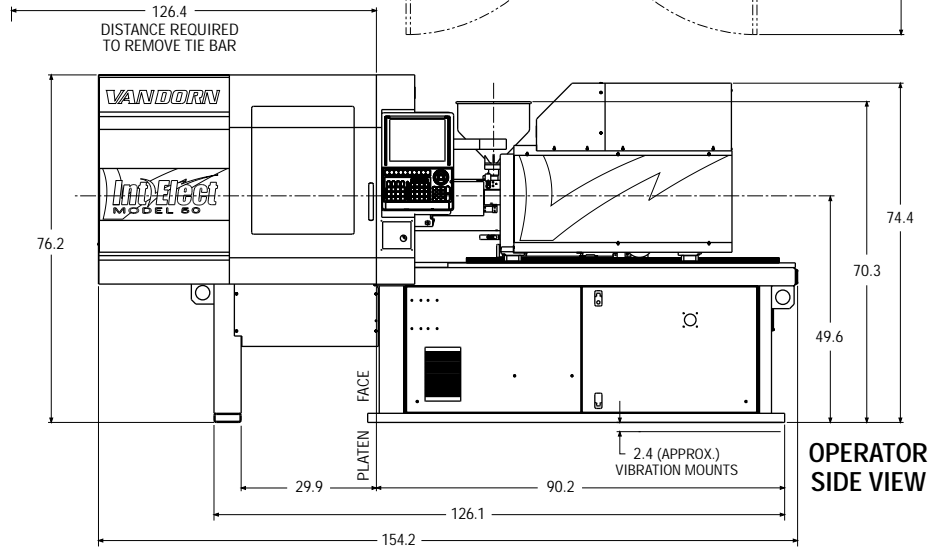
Int Elect
MODEL 50



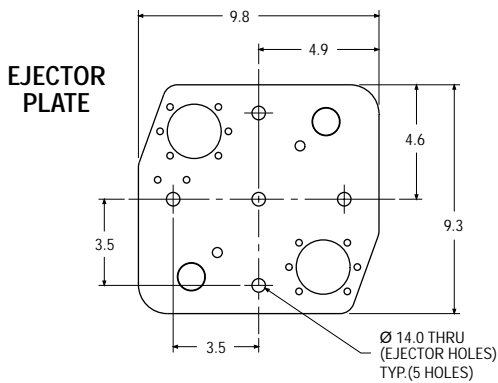
TOP VIEW



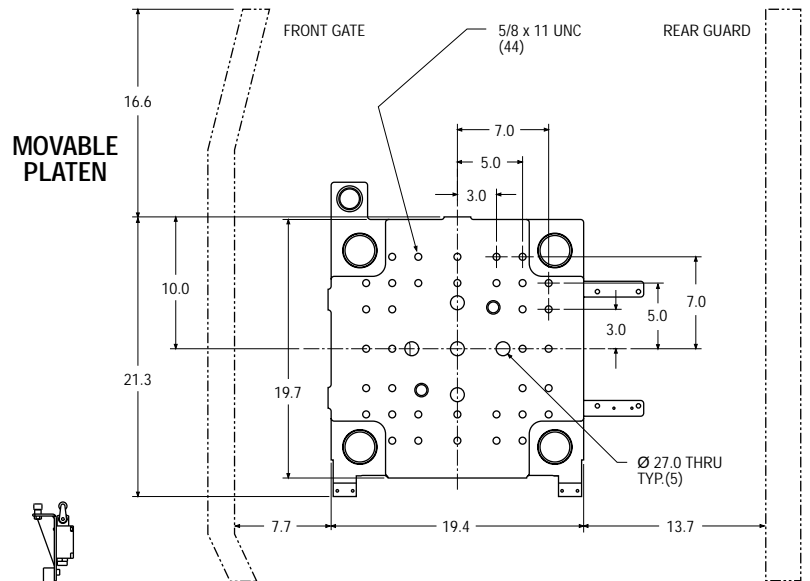
INJECTION END VIEW



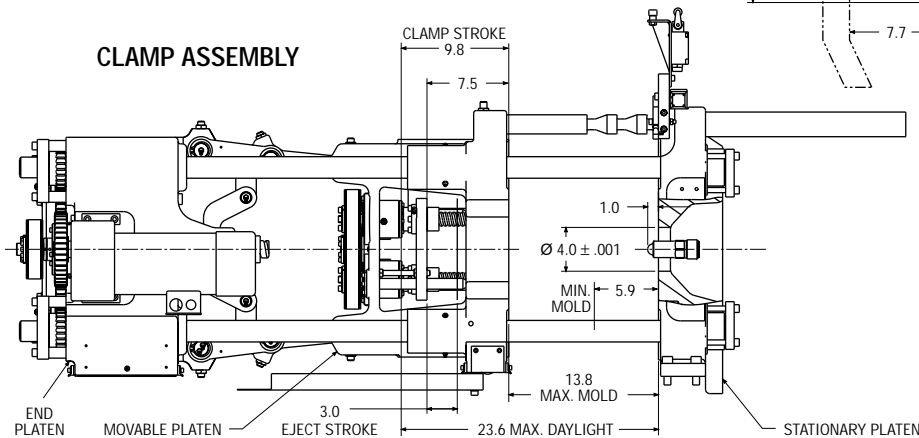
OPERATOR SIDE VIEW



EJECTOR PLATE



MOVABLE PLATEN



CLAMP ASSEMBLY

DemagPlastics Group
VAN DORN

Van Dorn Demag Corporation
11792 Alameda Drive
Strongsville, Ohio 44149 USA
tel: 440/876.8960
fax: 440/876.4383
web: www.vandorndemag.com

6/03/1500
03.11.002.2