

HT Model 300

Demag Plastics Group				
Model Description	HT Model 300			
International Size Description	720	1220	1920	

Clamp Unit				
Clamp Force	U.S. tons kN	300	2,670	
Clamp Stroke - Max.	in. mm	24	610	
Open Daylight - Max.	in. mm	49	1,245	
Mold Thickness - Min.	in. mm	8	203	
Distance Between Tie Bars				
Horizontal	in. mm	25	635	
Vertical	in. mm	25	635	
Platen Size				
Horizontal (Standard)	in. mm	37	940	
Vertical	in. mm	37	940	
Tie Bar Diameter	in. mm	4.25	108	
Clamp Speeds				
Closing	in./sec. mm/sec	27	686	
Opening	in./sec. mm/sec	39	991	
Ejector Force	U.S. tons kN	8.3	74	
Ejector Stroke	in. mm	6.0	152	

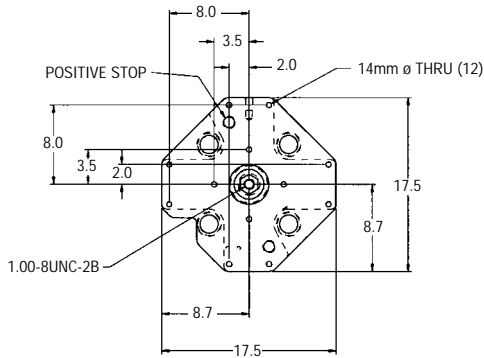
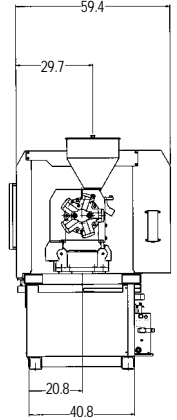
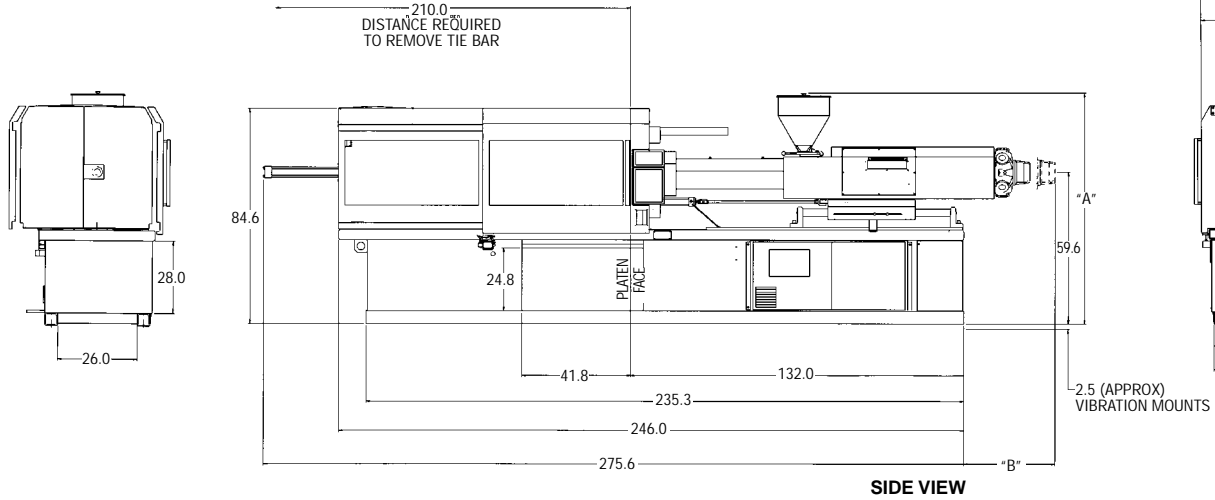
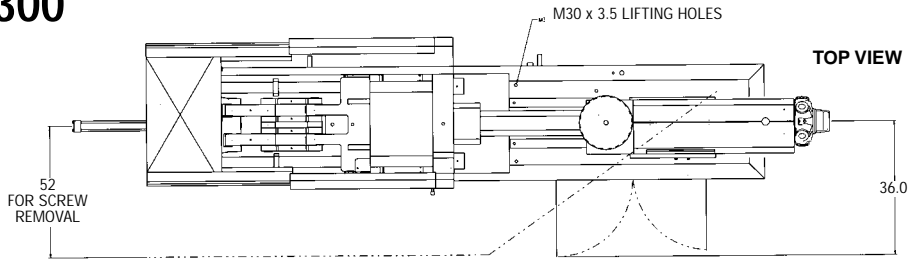
Injection Unit		720		1220		1920	
	Measure	Std.	HiPr	Std.	HiPr	Std.	HiPr
Injection Capacity (GPPS)	oz.	14.7	11.9	25.4	17.6	40.3	29.6
	g	417	337	720	500	1,143	840
Injection Capacity	cu. in.	27.0	21.8	46.6	32.4	74.0	54.4
	ccm	442	358	763	530	1,212	891
Recovery Rate (GPPS)	oz./sec.	1.38	1.73	1.67	1.69	2.25	1.55
	g/sec	39.0	49.0	47.4	48.0	63.8	43.9
Injection Pressure	psi	23,757	29,329	23,264	33,501	22,916	31,191
	bar	1,638	2,022	1,604	2,310	1,580	2,151
Injection Rate (@ 10,000 psi)	cu. in./sec.	25.1	20.4	25.7	17.8	26.1	19.1
Injection Rate (@ 700 bar)	ccm/sec	142	334	421	292	427	314
Injection Stroke	in.	8.9	8.9	10.6	10.6	12.4	12.4
	mm	225	225	270	270	315	315
Screw Diameter	in.	1.97	1.77	2.36	1.97	2.76	2.36
	mm	50	45	60	50	70	60
Screw L/D Ratio		20/1	20/1	20/1	20/1	20/1	20/1
Maximum Screw Speed	rpm	286	467	239	353	205	221
Back Pressure Adjust	psi	50-300	50-300	50-300	50-300	50-300	50-300
	bar	5-21	5-21	5-21	5-21	5-21	5-21
Barrel Heating Capacity	kW	13.7	11.7	21.7	17.9	33.4	25.6

General Machine Specifications		720		1220		1920	
	Measure						
Length	ft. m	23.0	7.0	23.0	7.0	26.1	8.0
Width	ft. m	5.2	1.6	5.2	1.6	5.2	1.6
Height	ft. m	7.8	2.4	7.8	2.4	7.8	2.4
Machine Weight (approx.)	lb. kg	28,200	12,800	28,200	12,800	28,200	12,800

Performance specifications are based on theoretical data and mold, material and conditions. Since continuous improvement is Demag Plastics Group's policy, we reserve the right to change specifications, designs and performance data without prior notice or obligation.

The specifications listed are standard. However, Demag Plastics Group will provide engineered options and solutions to meet virtually any performance requirements including high-pressure and high-speed configurations.

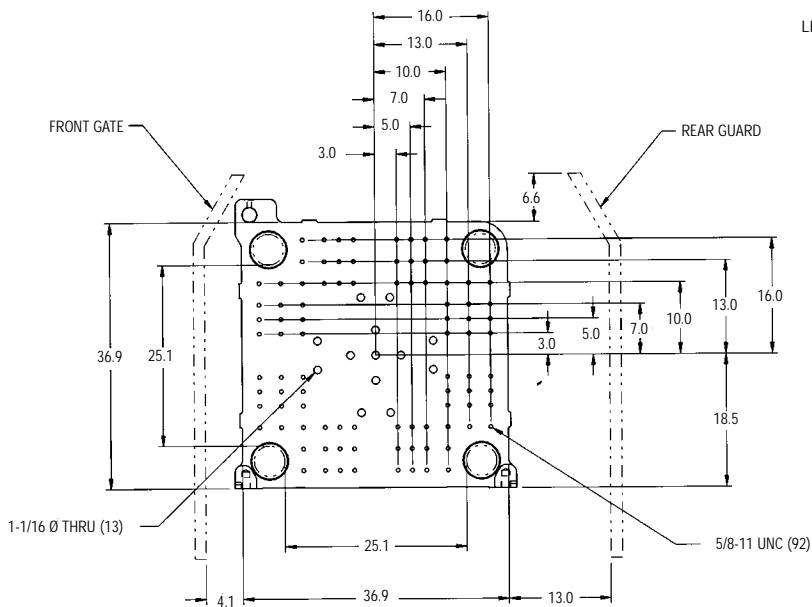
HT Model 300



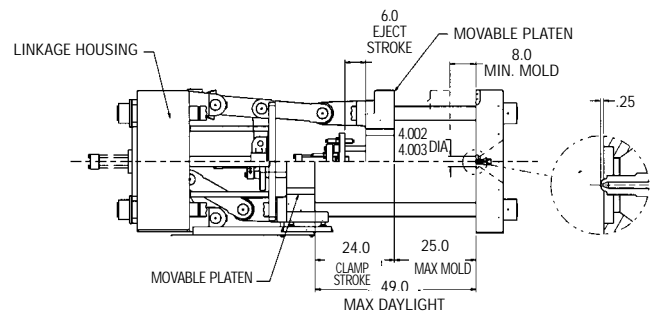
EJECTOR PLATE

Injection Unit	A (in.)	B (in.)
STANDARD BARREL		
50mm/720	90.4	—
60mm/1220	91.8	19.4
70mm/1920	91.6	36.5

Note: Dimensions based on optional hopper.



MOVABLE PLATEN



STATIONARY PLATEN