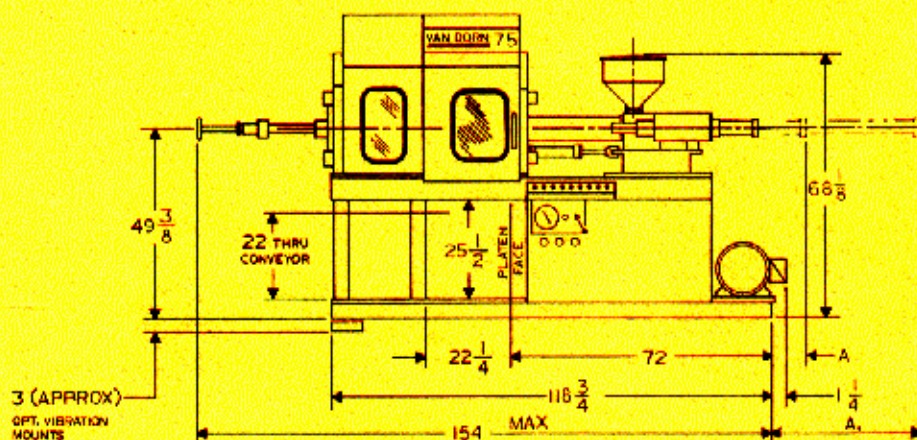
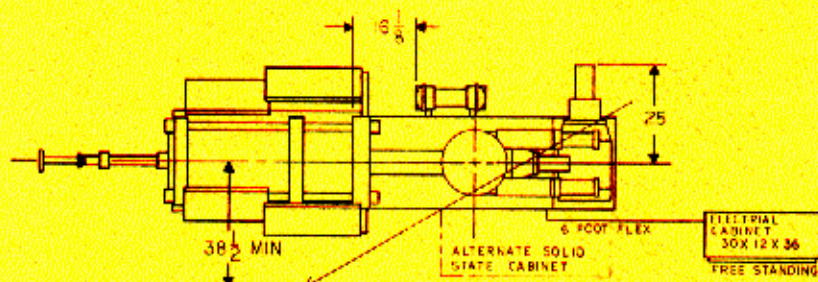
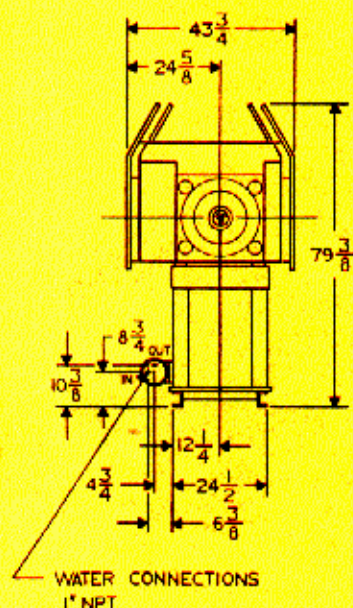


VAN DORN®

TOGGLE CLAMP

75-RS-3/5F

MACHINE	BARREL TYPE	
	STD BARREL	VENTED BARREL
75 RS 3F	—	—
75 RS 5F	—	—



Injection Unit

	75 RS 3F	75 RS 5F
Inject Capacity—Calculated (cu.in.)	5.5	9.2
Inject Capacity—G.P. Polystyrene (Oz.)*	3	5
Recovery Rate—G.P. PS (oz./sec.)†	33	55
Injection Pressure—Max. (p.s.i.)	17,900	19,000
Inject Rate—at 10,000 p.s.i. (cu. in./sec.)	7.0	6.7
Inject Stroke (in.)	5.0	6.19
Screw Diameter (in.)	1.19	1.38
Barrel L/D Ratio	20:1	20:1
Screw Speed Range (R.P.M.)	30-306	30-310††
Back Press. Adjust (screw rotating—p.s.i.)	75-300	75-300

General Specifications

	75 RS 3F	75 RS 5F
Pump Motor—Hydraulic System (HP)	15	15
System Pressure (p.s.i.)	2000	2000
Total Heating Wattage (KW)	4.8	7.8
Number of Heat Control Zones	3	3
Comb. Pump Capacity (G.P.M. @ 100 p.s.i.)	22	22
Oil Capacity (Gal.)	70	70
Hopper Capacity (Lb.)	40	40
Machine Weight (Lb. approx.)	6600	6750
Machine Dimensions—Length (ft.)	12.8	12.8
—Width (ft.)	3.7	3.7
—Height (ft.)	6.7	6.7

Clamping Unit

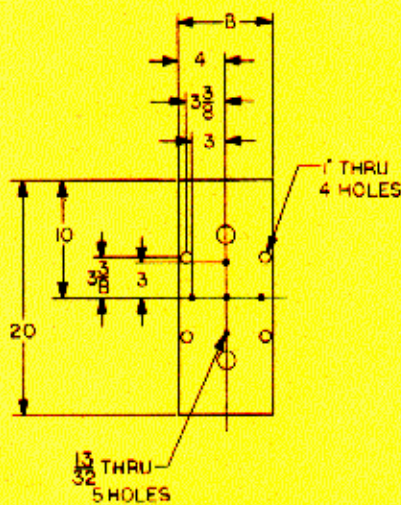
	3F & 5F
Clamp Force (tons)	75
Clamp Stroke—Adjustable (in.)	5-9.25
Open Daylight—Max. (in.)	22.25
Mold Thickness—Min./Max. (in.)	4-13
Platen Size—Standard—HxV (in.)	23.75 x 21.50
Dist. Between Rods—Std. HxV (in.)	16 x 13.6
Tie Rod Diameter (in.)	2.12
Clamp Speeds:	
Closing (in./sec.)	30.5
Opening (in./sec.)	48
Ejector Force (tons)	4.7
Ejector Stroke (in.)	2.5

* Dependent upon mold, material and conditions.

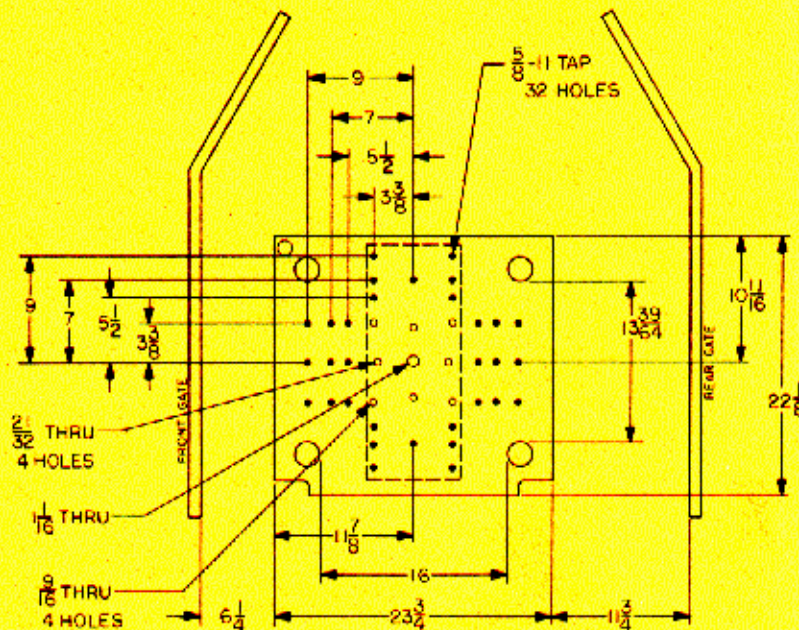
† Average value based on S.P.I. test procedures.

†† Higher torque motor available with lower R.P.M. and recovery rate.

Since continuous improvement is Van Dorn's policy, we reserve the right to change specifications, designs and performance data without prior notice or obligation.



HYD. K.O. PLATE



MOVABLE PLATEN

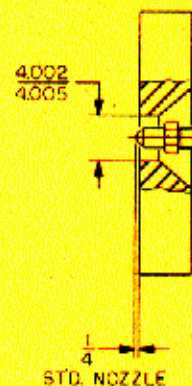
75-RS-3/5F

Van Dorn's fluid drive, or F-Series, toggle clamp machines feature hydraulically driven screws that generate high-quality homogeneous melts at high rates. Stable screw speeds and precise, infinitely variable back pressure control are features contributing to outstanding molding output.

Add faster set-ups, improved molding speeds and minimal maintenance and you have the injection molding capability molders identify with the name, Van Dorn.

STANDARD FEATURES

- Large part removal clearance • Purge guard with interlock
- Pivoting injection unit • Integral-base drip pan • Full-floating hardened toggle pins • Automatic oil lubrication.



STATIONARY PLATEN

VAN DORN®

Committed to the future of plastics

VAN DORN PLASTIC MACHINERY CO., | A Division of Van Dorn Company

11792 Alameda Dr. • Strongsville, Ohio 44136 • Write: P.O. Box 8849 • Strongsville, Ohio 44136 • Telephone: (216) 238-8960