

Injection Unit

International Size		4300		6800		6800C	12300	
	Measure	Std.	HiPr	Std.	HiPr	Std.	Std.	HiPr
Injection Capacity (GPPS)	oz.	89.6	63.5	139.1	103.7	165.5	264.9	189.6
	g	2,540	1,801	3,943	2,941	4,692	7,509	5,376
Injection Capacity	cu.in.	164.4	116.6	255.2	190.3	303.7	486.0	348.0
	ccm	2,694	1,910	4,181	3,119	4,976	7,964	5,702
Recovery Rate-Std.	oz./sec.	3.77	3.91	4.43	4.11	4.89	5.64	3.81
	g/sec.	107	111	126	117	139	160	108
Injection Pressure-Max.	psi	23,136	32,625	23,488	31,490	19,736	20,901	29,192
	bar	1,595	2,249	1,619	2,171	1,361	1,441	2,013
Injection Rate (@ 10,000psi) (@ 700 bar)	cu.in./sec.	62.9	44.6	62.0	46.2	73.8	69.7	49.9
	ccm/sec.	1,031	731	1,016	758	1,209	1,142	817
Injection Stroke	in.	15.0	15.0	17.3	17.3	17.3	23.6	23.6
	mm	380	380	440	440	440	600	600
Screw Diameter	in.	3.74	3.15	4.33	3.74	4.72	5.12	4.33
	mm	95	80	110	95	120	130	110
Screw L/D Ratio		20/1	20/1	20/1	20/1	20/1	20/1	20/1
Maximum Screw Speed-Std.	rpm	151	230	130	165	119	111	111
Back Pressure Adjust	psi	75-300	75-300	75-300	75-300	75-300	75-300	75-300
	bar	5-21	5-21	5-21	5-21	5-21	5-21	5-21
Barrel Heating Capacity	kW	56.0	42.8	63.1	53.8	68.2	82.7	67.3

General Machine Specifications

		4300		6800		6800C	12300	
	Measure	Std.	HiPr	Std.	HiPr	Std.	Std.	HiPr
Pump Motor	hp	100 + 30	100 + 30	100 + 30	100 + 30	100 + 30	100 + 30	100 + 30
	kW	75 + 22	75 + 22	75 + 22	75 + 22	75 + 22	75 + 22	75 + 22
Pump Capacity (@100psi / 7 bar)	gpm	171	171	171	171	171	171	171
	lpm	648	648	648	648	648	648	648
Oil Capacity	gal.	200	200	200	200	200	200	200
	L	757	757	757	757	757	757	757
Machine Weight (approx.)	lb.	*	*	*	*	*	90,000	90,000
	Kg						40,900	40,900

Machine Dimensions

		4300		6800		6800C	12300	
	Measure	Std.	HiPr	Std.	HiPr	Std.	Std.	HiPr
Length	ft.	32.7	32.7	33.3	32.7	34.0	33.1	33.1
	m	9.9	9.9	10.16	9.9	10.4	10.1	10.1
Width	ft.	9.9	9.9	9.9	9.9	9.9	9.9	9.9
	m	3.0	3.0	3.0	3.0	3.0	3.0	3.0
Height	ft.	10.2	10.2	10.2	10.2	10.2	10.2	10.2
	m	3.1	3.1	3.1	3.1	3.1	3.1	3.1

*Consult your sales representative

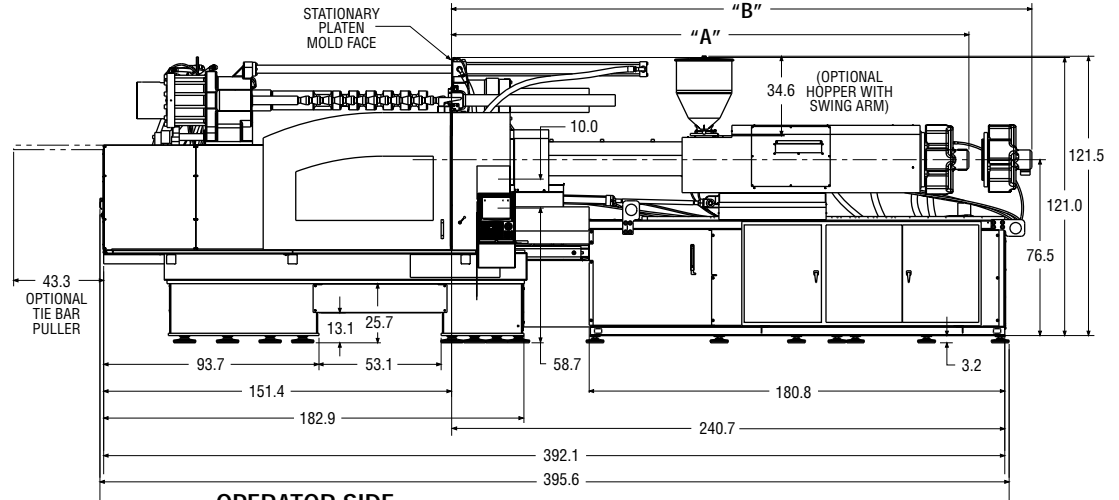
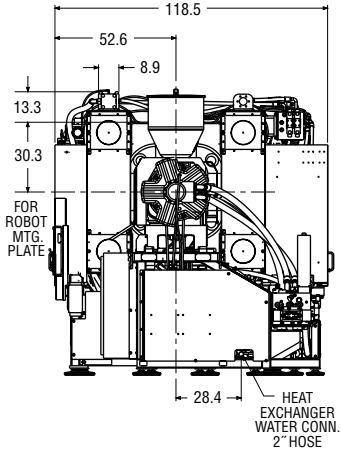
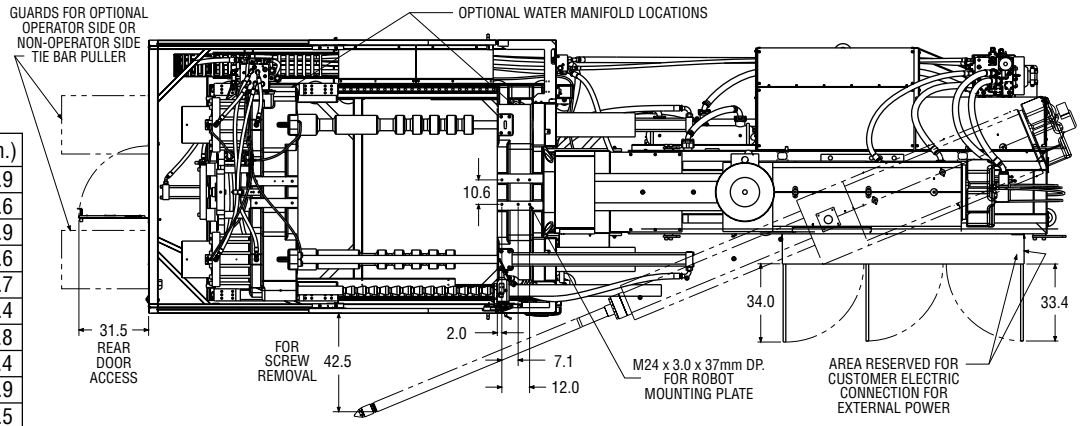
Performance specifications are base on theoretical data and mold, material and conditions. Since continuous improvement is Van Dorn Demag's policy, we reserve the right to change specifications, designs and performance data without prior notice or obligation.

The specifications listed are standard. However, Van Dorn Demag will provide engineered options and solutions to meet virtually any performance requirements including high-pressure and high-speed configurations.

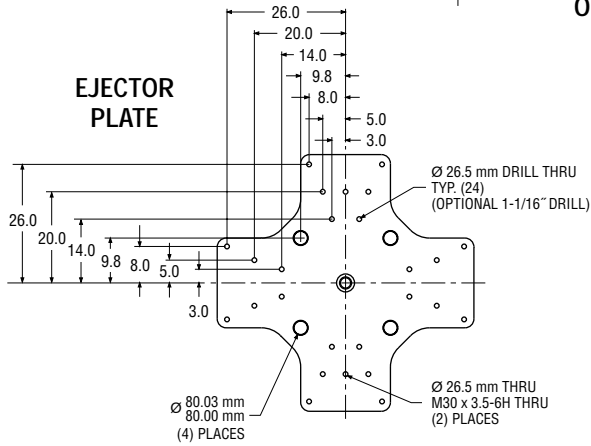
Clamp Unit

Clamp Force	U.S. tons	950
	kN	8,455
Open Force	U.S. tons	57
	kN	508
Clamp Stroke-Max.	in.	68.9
	mm	1,750
Open Daylight-Max.	in.	86.6
	mm	2,200
Mold Thickness-Min.	in.	17.7
	mm	450
Mold Thickness-Max.	in.	48.0
	mm	1,220
Distance Between Tie Bars		
Horizontal	in.	49.2
	mm	1,250
Vertical	in.	42.3
	mm	1,075
Platen Size		
Horizontal	in.	66.4
	mm	1,686
Vertical	in.	60.6
	mm	1,540
Clamp Speeds		
Close Fast (@ 1000psi/69 bar)	in./sec.	34.4
	mm/sec.	874
Open Fast (@ 1000 psi/69 bar)	in./sec.	33.6
	mm/sec.	854
Ejector Force	U.S. tons	24.5
	kN	218
Ejector Stroke	in.	10.8
	mm	275

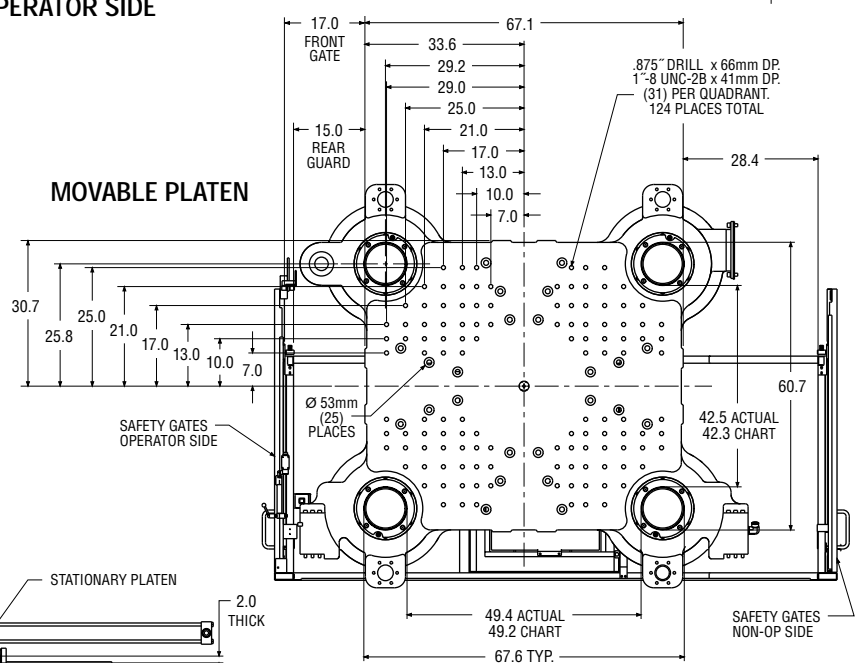
Injection Unit	A (in.)	B (in.)
80mm 20:1 4300RR	186.4	218.9
80mm 25:1 4300RR	202.2	234.6
95mm 20:1 4300RR	200.4	232.9
95mm 25:1 4300RR	219.1	251.6
110mm 20:1 6800RR	223.2	255.7
110mm 25:1 6800RR	256.9	289.4
120mm 20:1 6800RR	228.3	260.8
120mm 25:1 6800RR	255.9	288.4
130mm 20:1 12300RR	223.4	255.9
130mm 25:1 12300RR	249.0	281.5



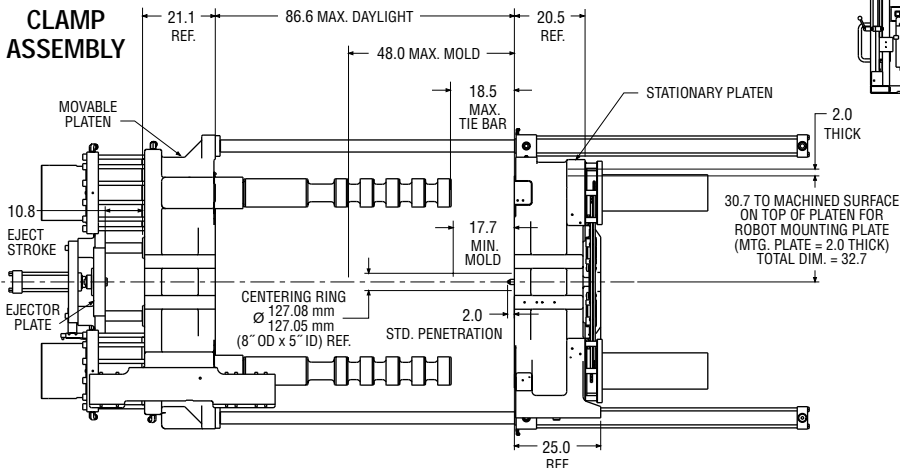
OPERATOR SIDE



EJECTOR PLATE



MOVABLE PLATEN



CLAMP ASSEMBLY