

VANDORN™

CALIBER 

MODEL 2750

Injection Unit

International Size	Measure	12300		17000		26000		37000	
		Std.	HiPr	Std.	HiPr	Std.	HiPr	HiPrA	HiPrB
Injection Capacity (GPPS)	oz. g	264.9 4,340	189.6 5,476	362.5 10,276	291.4 8,362	540.5 15,322	417.4 11,833	759.9 21,543	604.5 17,138
Injection Capacity	cu. in. ccm	486 7,966	348 5,704	665 10,899	535 8,769	992 16,259	766 12,555	1,394 22,848	1,109 18,177
Recovery Rate (GPPS)	oz./sec. g/sec	8.14 231	5.50 156	9.53 270	7.64 216	10.10 286	7.43 211	10.71 304	7.05 200
Injection Pressure	psi bar	22,522 1,553	31,457 2,168	23,044 1,588	28,669 1,976	23,434 1,616	30,345 2,091	23,141 1,595	29,091 2,005
Injection Rate (@ 10,000 psi) (@ 700 bar)	cu. in./sec. ccm/sec	128.2 2,101	91.8 1,504	125.2 2,052	100.7 1,650	123.2 2,019	95.1 1,559	124.7 2,044	99.2 1,626
Injection Stroke	in. mm	23.6 599	23.6 599	26.0 660	26.0 660	29.9 760	29.9 760	33.5 851	33.5 851
Screw Diameter	in. mm	5.12 130	4.33 110	5.71 145	5.12 130	6.50 165	5.71 145	7.28 185	6.50 165
Screw L/D Ratio		20/1 20/1	20/1 20/1	20/1 20/1	20/1 20/1	20/1 20/1	20/1 20/1	20/1 20/1	20/1 20/1
Maximum Screw Speed	rpm rpm	160 160	160 160	145 145	150 150	113 113	113 113	79.0 79.0	79.0 79.0
Back Pressure Adjust	psi bar	75-300 5.12-20.7	75-300 5.12-20.7	75-300 5.12-20.7	75-300 5.12-20.7	75-300 5.12-20.7	75-300 5.12-20.7	75-300 5.12-20.7	75-300 5.12-20.7
Barrel Heating Capacity	kW kW	82.7 82.7	68.2 68.2	94.2 94.2	69.0 69.0	123 123	103 103	231.7 231.7	* *

*Consult your sales representative.

General Machine Specifications

	Measure	12300	17000	26000	37000
Pump Motor	hp kW	250 188	250 188	250 188	250 188
Pump Capacity	gpm lpm	328 1,243	328 1,243	328 1,243	328 1,243
Oil Capacity	gal. L	500 1,895	500 1,895	500 1,895	500 1,895
Machine Weight (approx.)	lb. kg	328,246 148,889	336,746 152,745	353,546 160,365	390,000 175,500
Machine Dimensions					
Length	ft. m	47.7 14.5	47.7 14.5	48.0 14.6	*
Width	ft. m	15.7 4.79	15.7 4.79	15.7 4.79	*
Height	ft. m	12.4 3.78	12.4 3.78	12.4 3.78	*

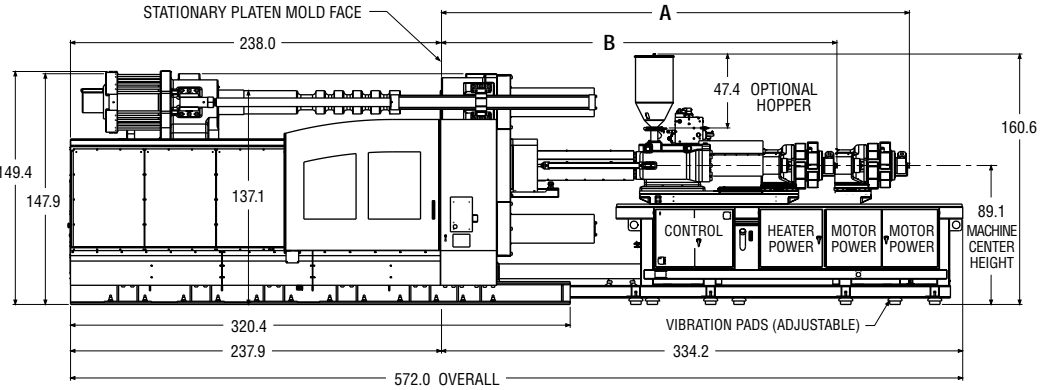
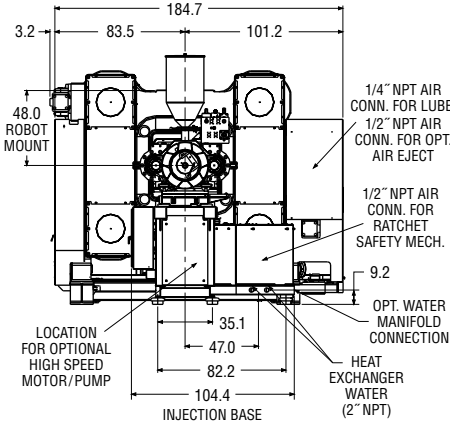
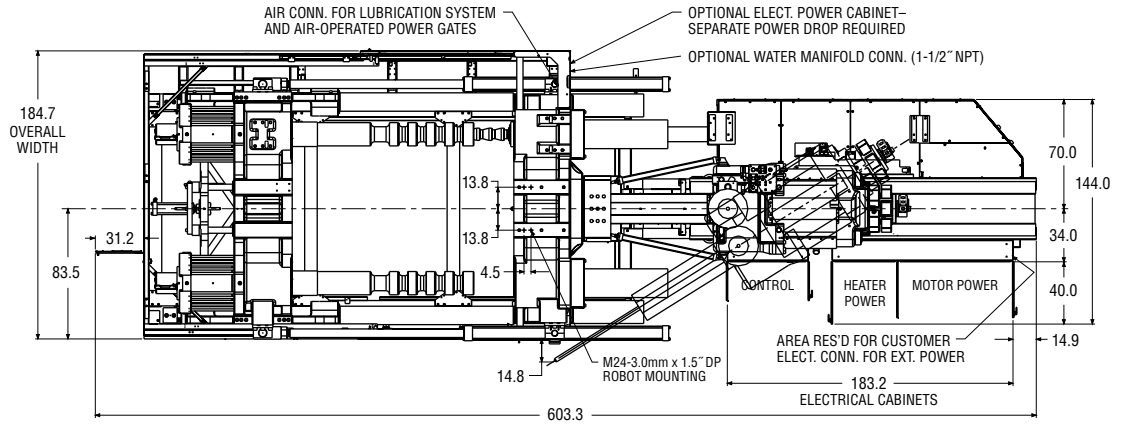
Clamp Unit

Clamp Force	U.S. tons kN	2,750 24,475
Open Force	U.S. tons kN	151 1,344
Clamp Stroke - Max.	in. mm	109.4 2,780
Open Daylight - Max.	in. mm	142.1 3,609
Mold Thickness - Min.	in. mm	32.7 830.6
Mold Thickness - Max.	in. mm	80.7 2,050
Distance Between Tie Bars		
Horizontal	in. mm	79.7 2,024
Vertical	in. mm	65.4 1,661
Platen Size		
Horizontal (Standard)	in. mm	110.2 2,799
Vertical	in. mm	95.4 2,423
Clamp Speeds		
Closing	in./sec. mm/sec.	23.1 587
Opening	in./sec. mm/sec.	25.8 655
Ejector Force	U.S. tons kN	48.0 427
Ejector Stroke	in. mm	15.7 399

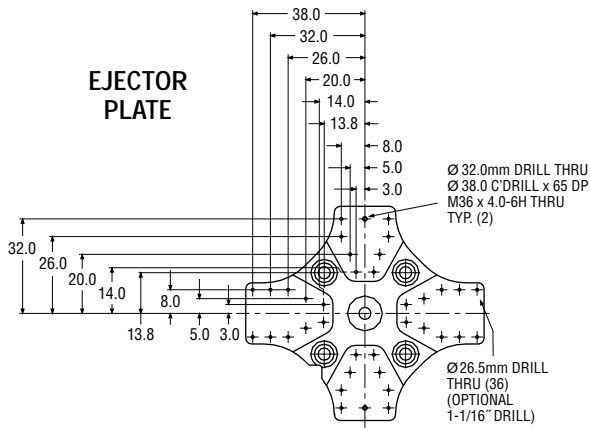
The specifications listed are standard. However, Van Dorn Demag will provide engineered options and solutions to meet virtually any performance requirements including high-pressure and high-speed configurations.

Performance specifications are based on theoretical data and mold, material and conditions. Since continuous improvement is Van Dorn Demag's policy, we reserve the right to change specifications, designs and performance data without prior notice or obligation.

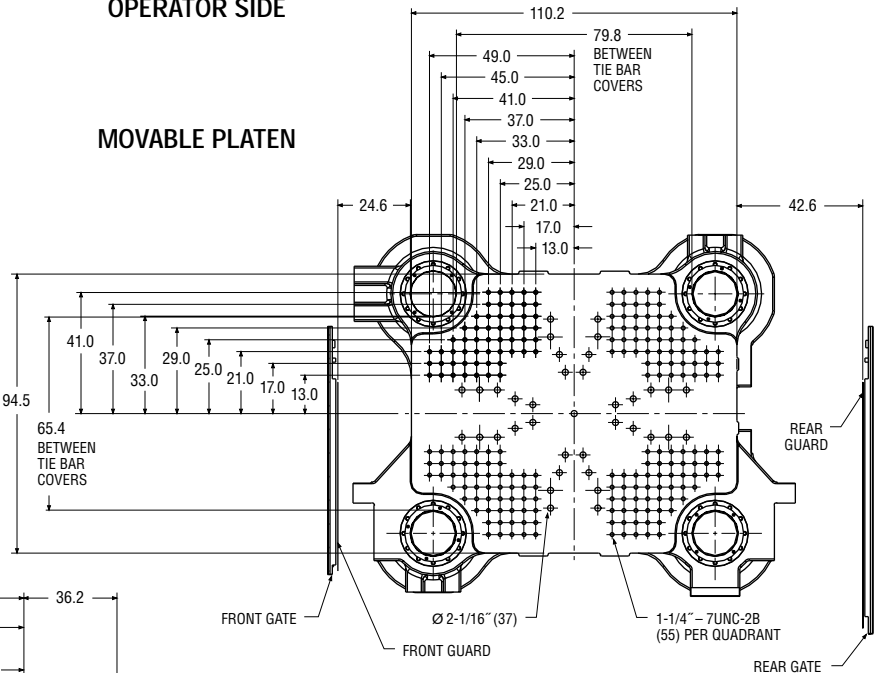
Injection Unit	A (in.)	B (in.)
STANDARD BARREL		
130mm 20:1 12300	223.5	273.1
130mm 25:1 12300	249.1	298.7
145mm 20:1 17000	253.5	303.1
145mm 25:1 17000	282.0	331.7
165mm 20:1 26000	288.8	338.4



OPERATOR SIDE



MOVABLE PLATEN



CLAMP ASSEMBLY

