

VANDORN™

CALIBER 
MODEL 1760

Injection Unit

International Size		6800-C	12300		17000	
	Measure	Std.	Std.	HiPr	Std.	HiPr
Injection Capacity (GPPS)	oz. g	166 4,692	265 4,340	190 5,376	363 10,276	291 8,260
Injection Capacity	cu. in. ccm	304 4,976	486 7,964	348 5,702	665 10,899	535 8,760
Recovery Rate (GPPS)	oz./sec. g/sec	6.97 198	7.52 213	5.08 144	7.39 210	5.72 162
Injection Pressure	psi bar	19,736 1,361	22,522 1,553	31,457 2,169	23,044 1,589	28,669 1,977
Injection Rate (@ 10,000 psi) (@ 700 bar)	cu. in./sec. ccm/sec	96.8 1,586	91.4 1,498	65.5 1,073	89.3 1,464	71.8 1,177
Injection Stroke	in. mm	17.3 440	23.6 600	23.6 600	26.0 660	26.0 660
Screw Diameter	in. mm	4.7 120	5.12 130	4.33 110	5.71 145	5.12 130
Screw L/D Ratio		20/1 20/1	20/1 20/1	20/1 20/1	20/1 20/1	20/1 20/1
Maximum Screw Speed	rpm rpm	170 170	148 148	148 148	112 112	112 112
Back Pressure Adjust	psi bar	75-300 5-21	75-300 5-21	75-300 5-21	75-300 5-21	75-300 5-21
Barrel Heating Capacity	kW kW	68.2 68.2	82.7 82.7	68.2 68.2	94.2 94.2	69.0 69.0

General Machine Specifications

	Measure	6800-C	12300	17000
Pump Motor	hp kW	175 130	175 130	175 130
Pump Capacity	gpm Lpm	232 878	232 878	232 878
Oil Capacity	gal. L	300 1,136	300 1,136	300 1,136
Machine Weight (approx.)	lb. kg	224,000 101,700	234,500 106,463	243,000 110,322
Machine Dimensions				
Length	ft. m	40.7 12.4	40.0 12.2	43.6 13.3
Width	ft. m	13.4 4.1	13.4 4.1	13.4 4.1
Height	ft. m	10.6 3.2	10.6 3.2	10.6 3.2

Performance specifications are based on theoretical data and mold, material and conditions. Since continuous improvement is Van Dorn Demag's policy, we reserve the right to change specifications, designs and performance data without prior notice or obligation.

Clamp Unit

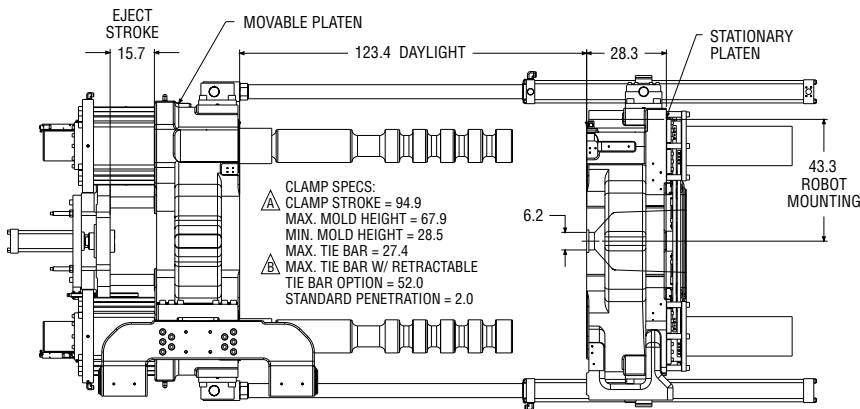
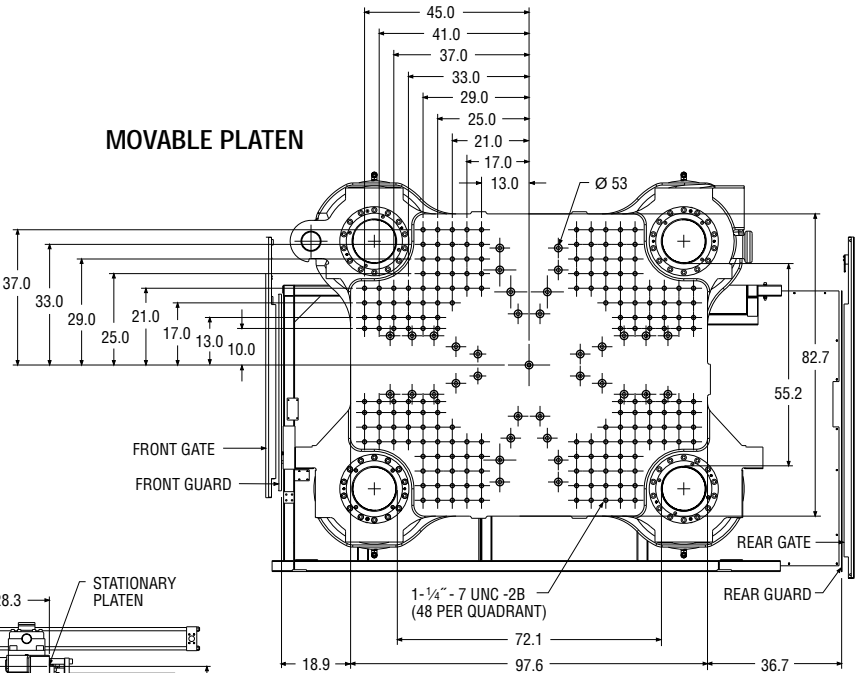
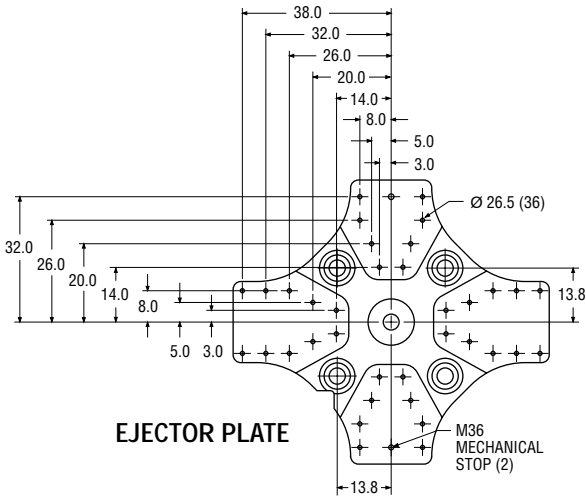
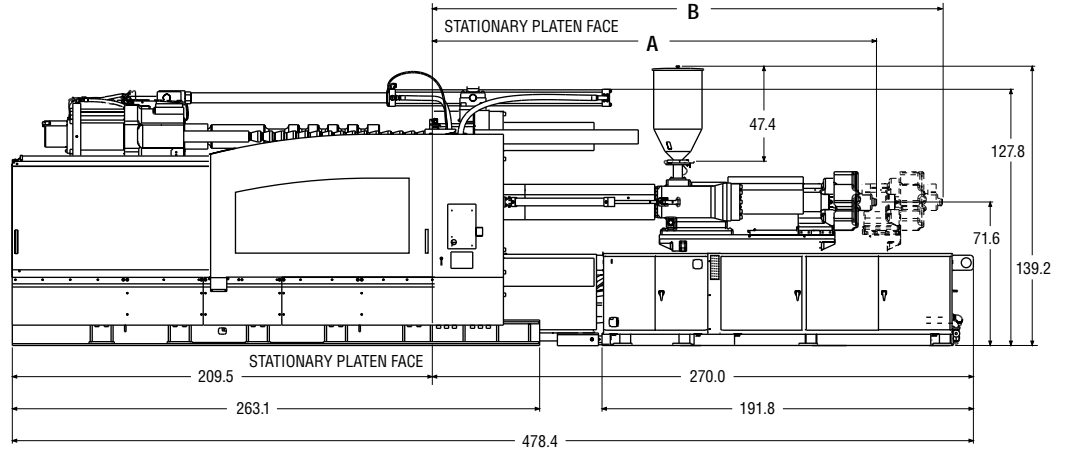
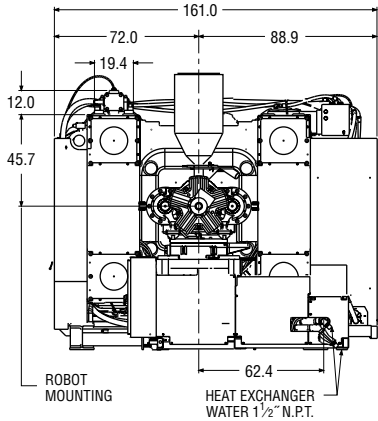
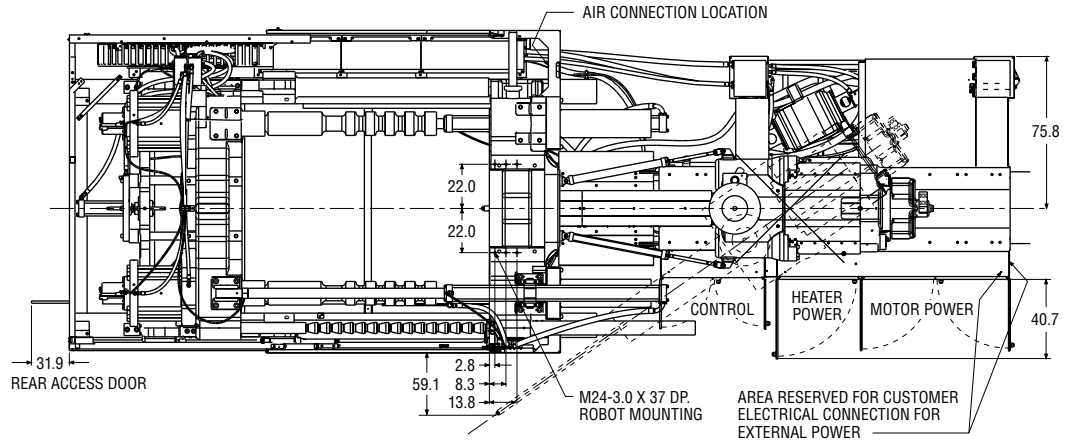
Clamp Force	U.S. tons kN	1,760 15,664
Open Force	U.S. tons kN	115 1,028
Clamp Stroke - Max.	in. mm	94.9 2,410
Open Daylight - Max.	in. mm	123.4 3,135
Mold Thickness - Min.	in. mm	28.5 725
Mold Thickness - Max.	in. mm	67.9 1,725
Distance Between Tie Bars		
Horizontal	in. mm	72.0 1,830
Vertical	in. mm	55.1 1,400
Platen Size		
Horizontal (Standard)	in. mm	97.6 2,480
Vertical	in. mm	82.7 2,100
Clamp Speeds		
Closing	in./sec. mm/sec.	23.0 584
Opening	in./sec. mm/sec.	22.1 560
Ejector Force	U.S. tons kN	48.0 428
Ejector Stroke	in. mm	15.7 400

The specifications listed are standard. However, Van Dorn Demag will provide engineered options and solutions to meet virtually any performance requirements including high-pressure and high-speed configurations.

VANDORN™

CALIBER
MODEL 1760

Injection Unit	"A"	"B"
95mm 20:1 6800RR	206.8	239.3
110mm 20:1 6800RR	220.5	253
130mm 20:1 12,300	223.4	259.3



CLAMP ASSEMBLY

DemagPlastics Group
VAN DORN

Van Dorn Demag Corporation
11792 Alameda Drive
Strongsville, Ohio 44149 USA
tel: 440/876.8960
fax: 440/876.4383
web: www.vandorndemag.com

6/03/1500
03.05.003.3